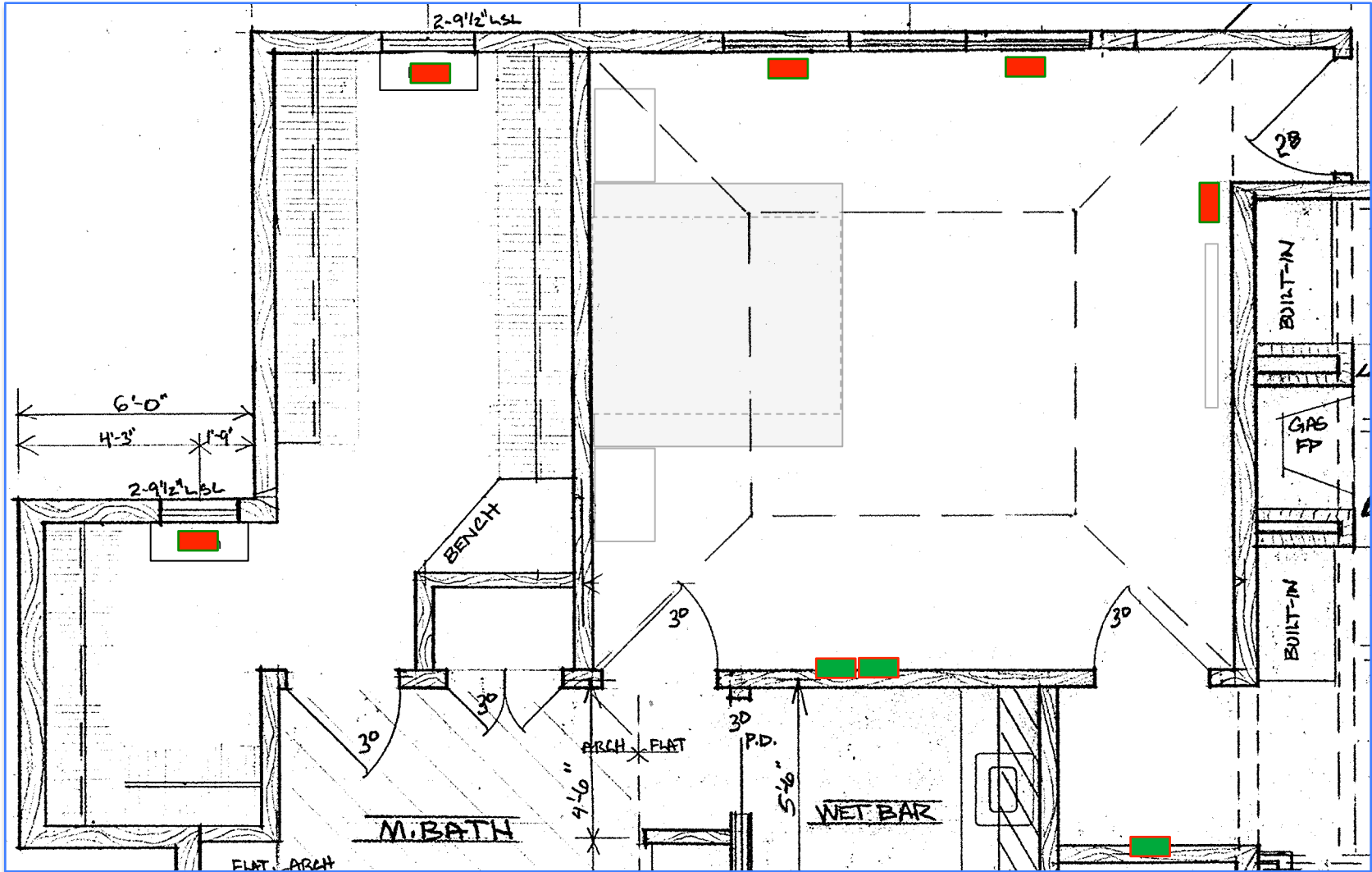


18" x 18" Wall Safe
(Built Into Cabinet)



Return Air Ducts

Scale: 4' per inch

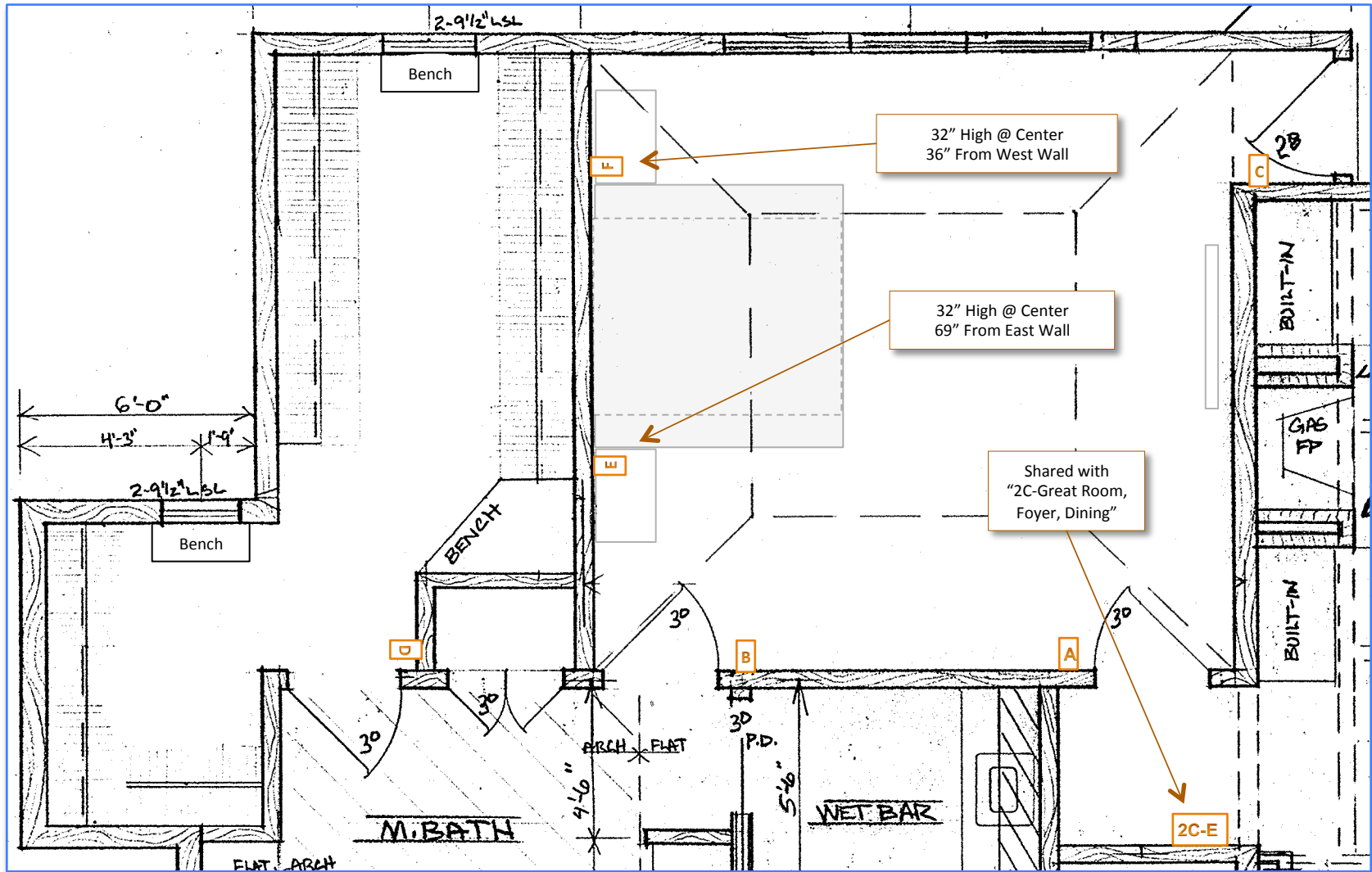
Floor Plan



HVAC Duct Locations

-  = Supply Air Duct
-  = Return Air Duct

Scale: 4' per inch

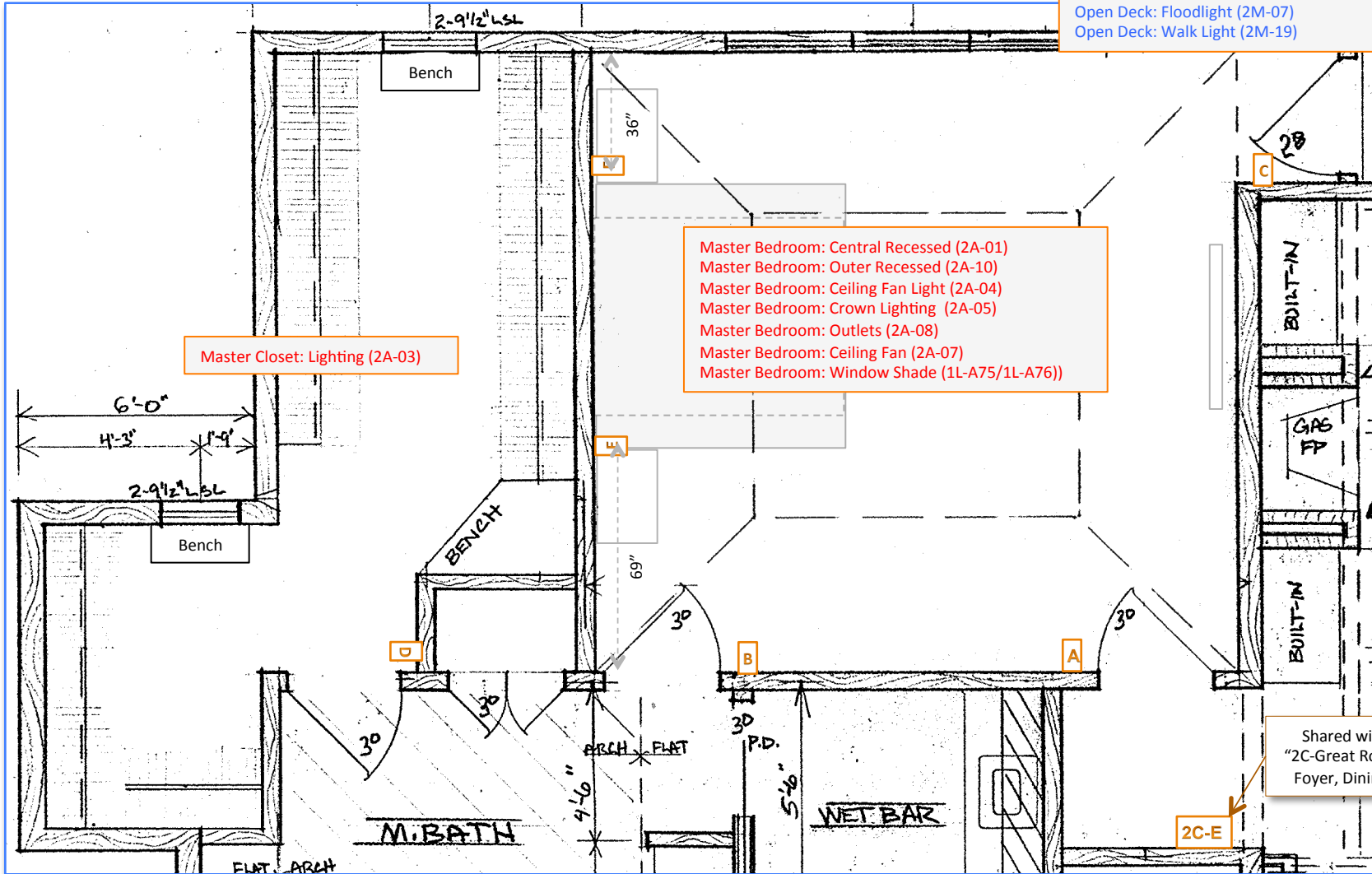


Lighting Controls

X = Switch Cluster

Scale: 4' per inch

- Hot Tub: Landscape (2M-17)
- Hot Tub: Soffit (2M-02)
- Patio: West Landscape (2M-01)
- South Yard (West): Flood (2M-03)
- Open Deck: Soffit (2M-05)
- Open Deck: Floodlight (2M-07)
- Open Deck: Walk Light (2M-19)



Lighting Controls

X = Switch Cluster

Scale: 4' per inch

Keypad Location 2A-A Master Bedroom, North Entry



- Master Bedroom: Central Recessed (2A-01)
- Master Bedroom: Outer Recessed (2A-10)
- Master Bedroom: Ceiling Fan Light (2A-04)
- Master Bedroom: Crown Lighting (2A-05)
- Master Bedroom: Outlets (2A-08)
- Master Bedroom: Ceiling Fan (2A-07)
- Master Bedroom: Window Shade (1L-A75/1L-A76))

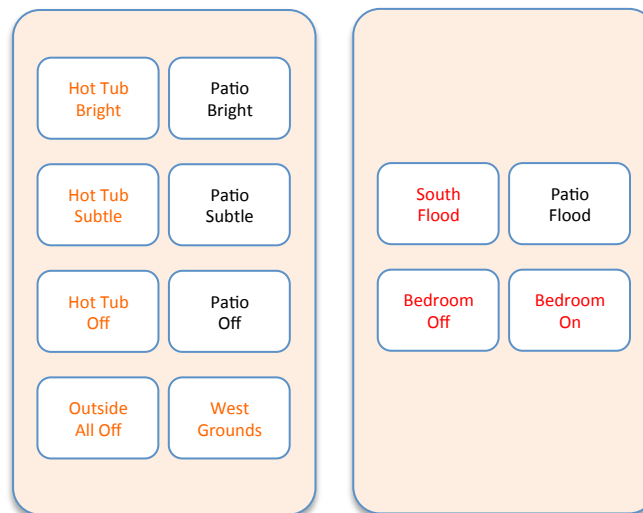
Cables
2 - Red

Keypad Location 2A-B Master Bedroom, South Entry



Cables
2 - Red

Keypad Location 2A-C (L&R) Master BR, Open Deck Entry

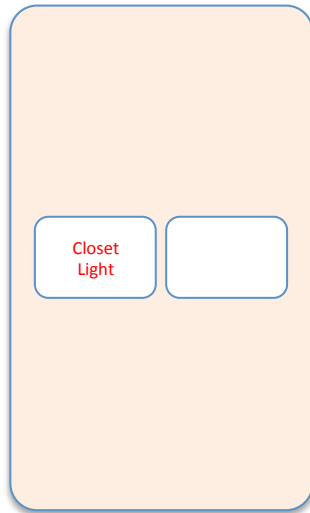


Cables
2 - Red
2 - Green

- Hot Tub: Landscape (2M-17)
- Hot Tub: Soffit (2M-02)
- Patio: West Landscape (2M-01)
- South Yard (West): Flood (2M-03)
- Open Deck: Soffit (2M-05)
- Open Deck: Floodlight (2M-07)
- Open Deck: Walk Light (2M-19)

- Master Bedroom: Central Recessed (2A-01)
- Master Bedroom: Outer Recessed (2A-10)
- Master Bedroom: Ceiling Fan Light (2A-04)
- Master Bedroom: Crown Lighting (2A-05)
- Master Bedroom: Outlets (2A-08)

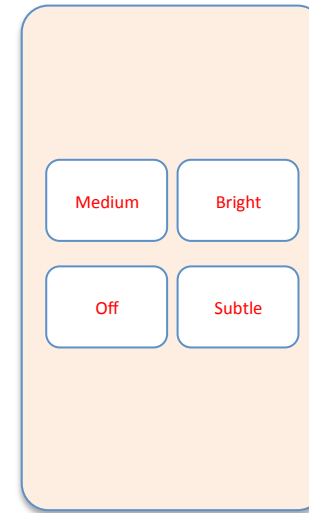
Keypad Location 2A-D Master Closet



Master Closet: Lighting (2A-03)

Cables
1 - Red

Keypad Location 2A-E Master BR, South Wall, Left of Bed

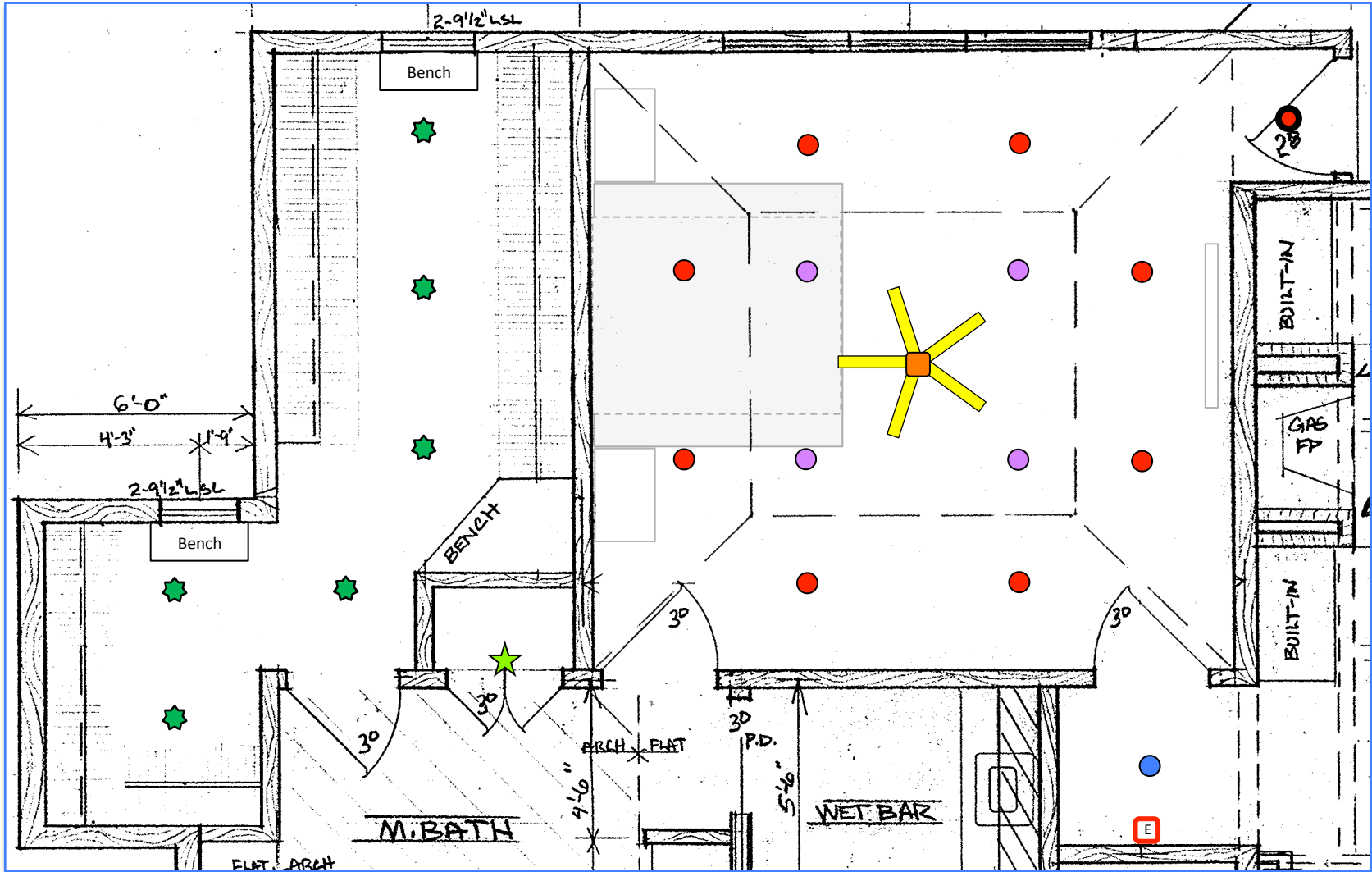


Cables
1 - Red

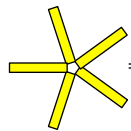
Keypad Location 2A-F Master BR, South Wall, Right of Bed



Cables
1 - Red



Lighting 1



= 42 "Ceiling Fan (2A-07)

● = 6" Slope Recessed (2A-10)

● = 6" LED Recessed (2A-02)

● = 6" LED Recessed (2A-01)

■ = Fan Light (2A-04)

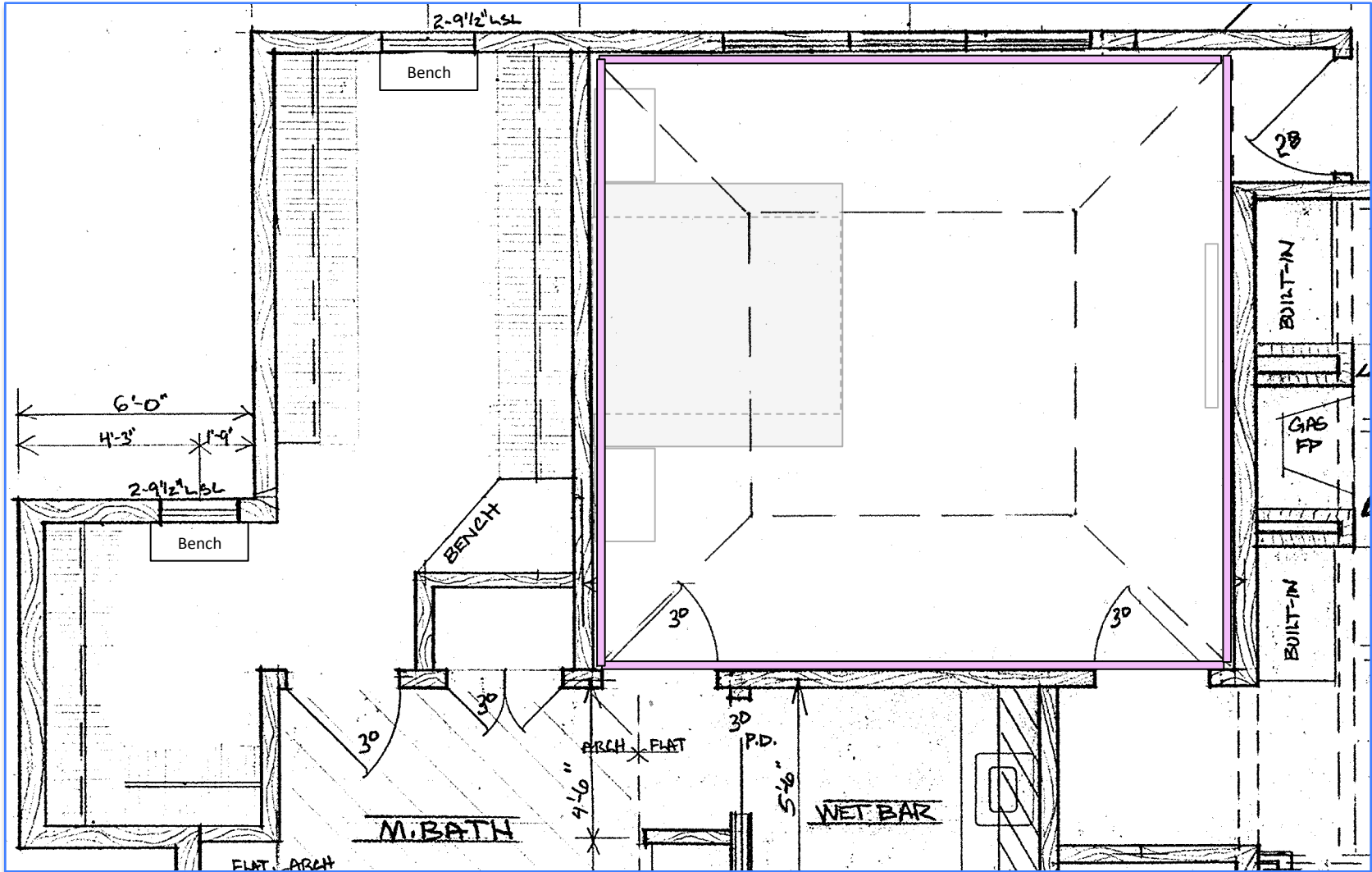
★ = Closet Lighting (2A-06)

★ = Surface Fixture (2A-03)

● = 4" Recessed (2A-10)

□ E = Standby Light

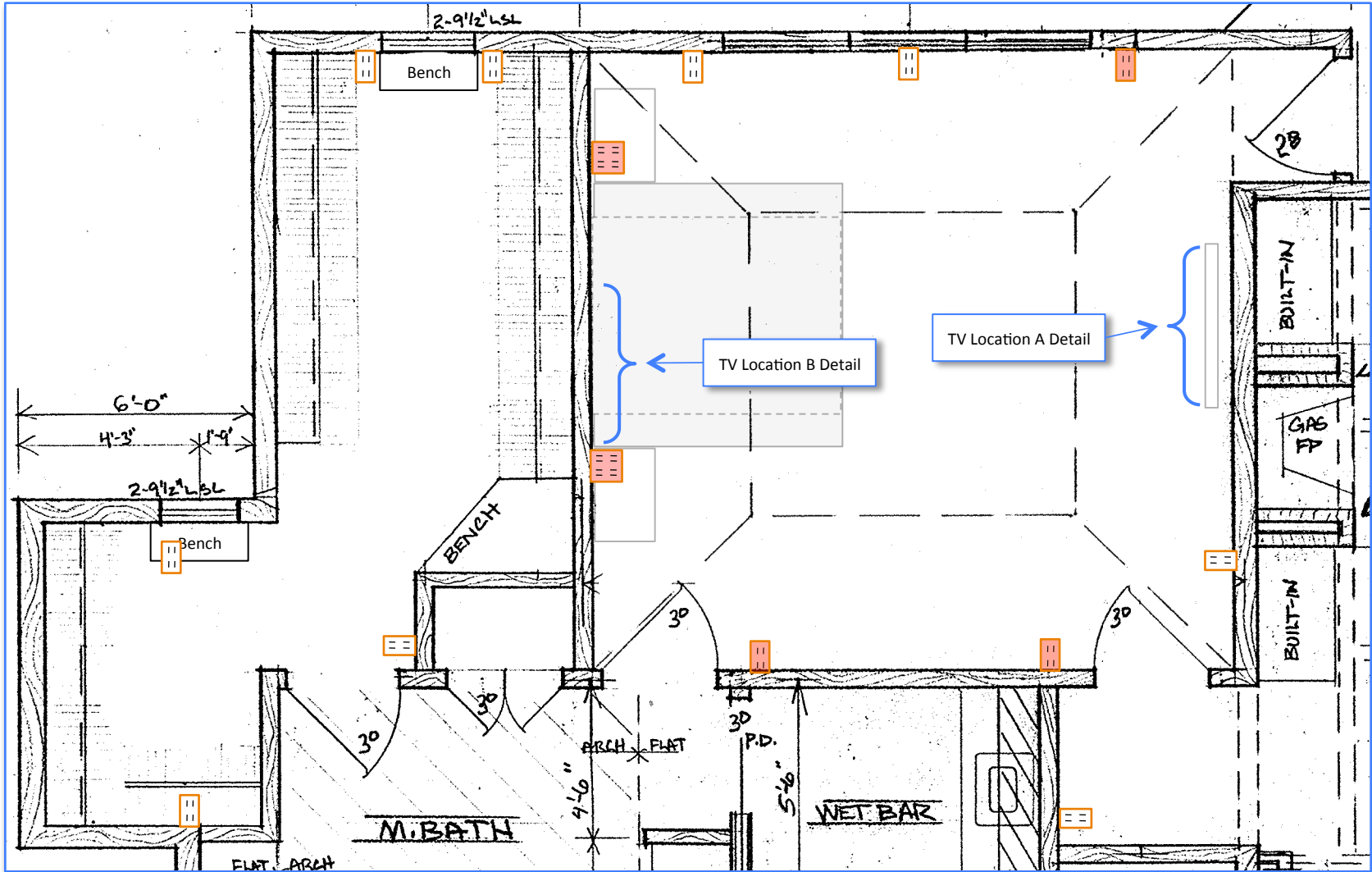
Scale: 4' per inch






Lighting 2

= Ceiling Lighting (2A-05) (~60 lineal ft)

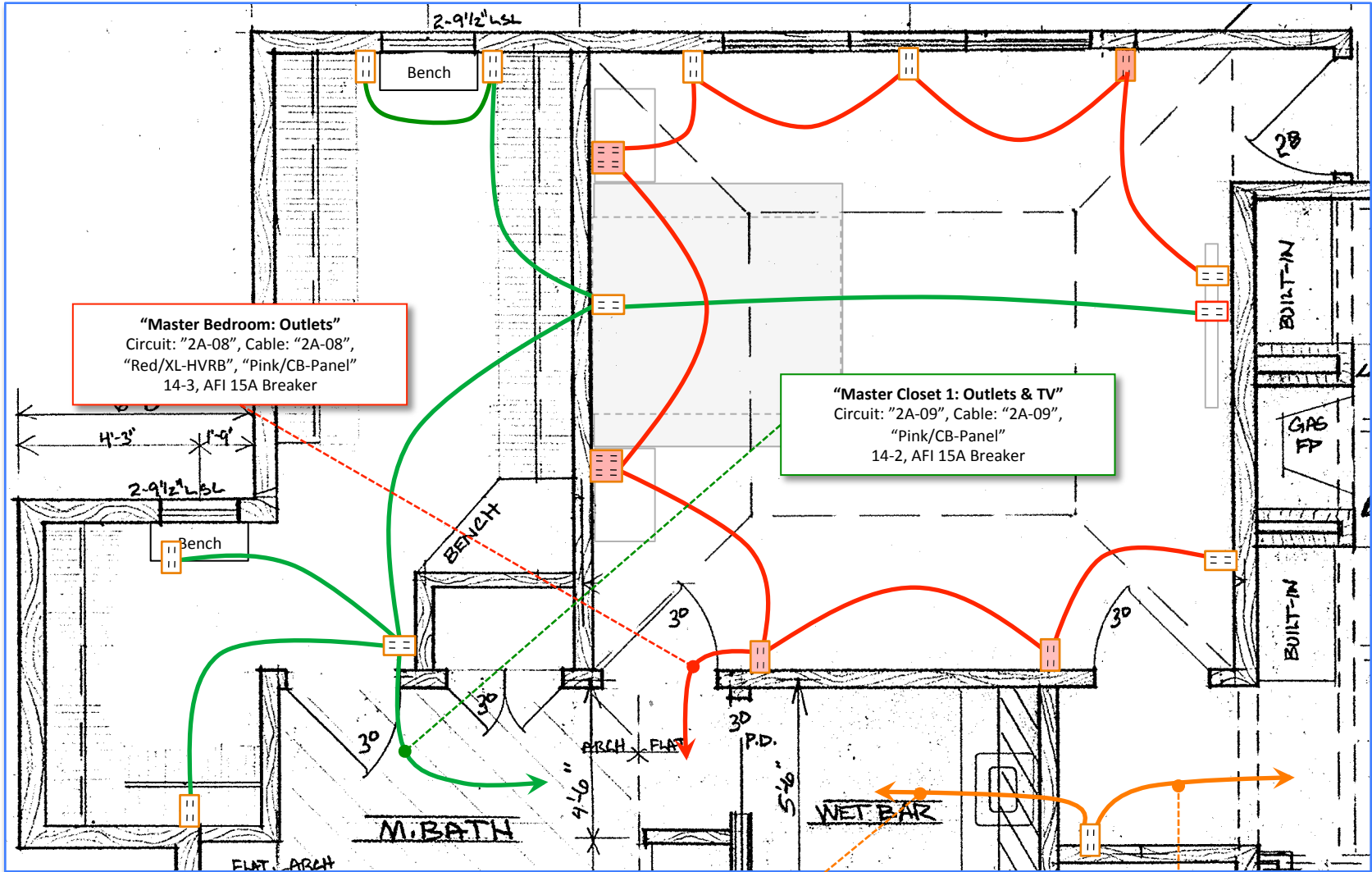
Scale: 4' per inch



Power

 = 15A Duplex  = 15A Duplex (1/2 Switched)  = 15A Quad (1/4 Switched)

Scale: 4' per inch


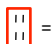

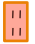


"Master Bedroom: Outlets"
 Circuit: "2A-08", Cable: "2A-08",
 "Red/XL-HVRB", "Pink/CB-Panel"
 14-3, AFI 15A Breaker

"Master Closet 1: Outlets & TV"
 Circuit: "2A-09", Cable: "2A-09",
 "Pink/CB-Panel"
 14-2, AFI 15A Breaker

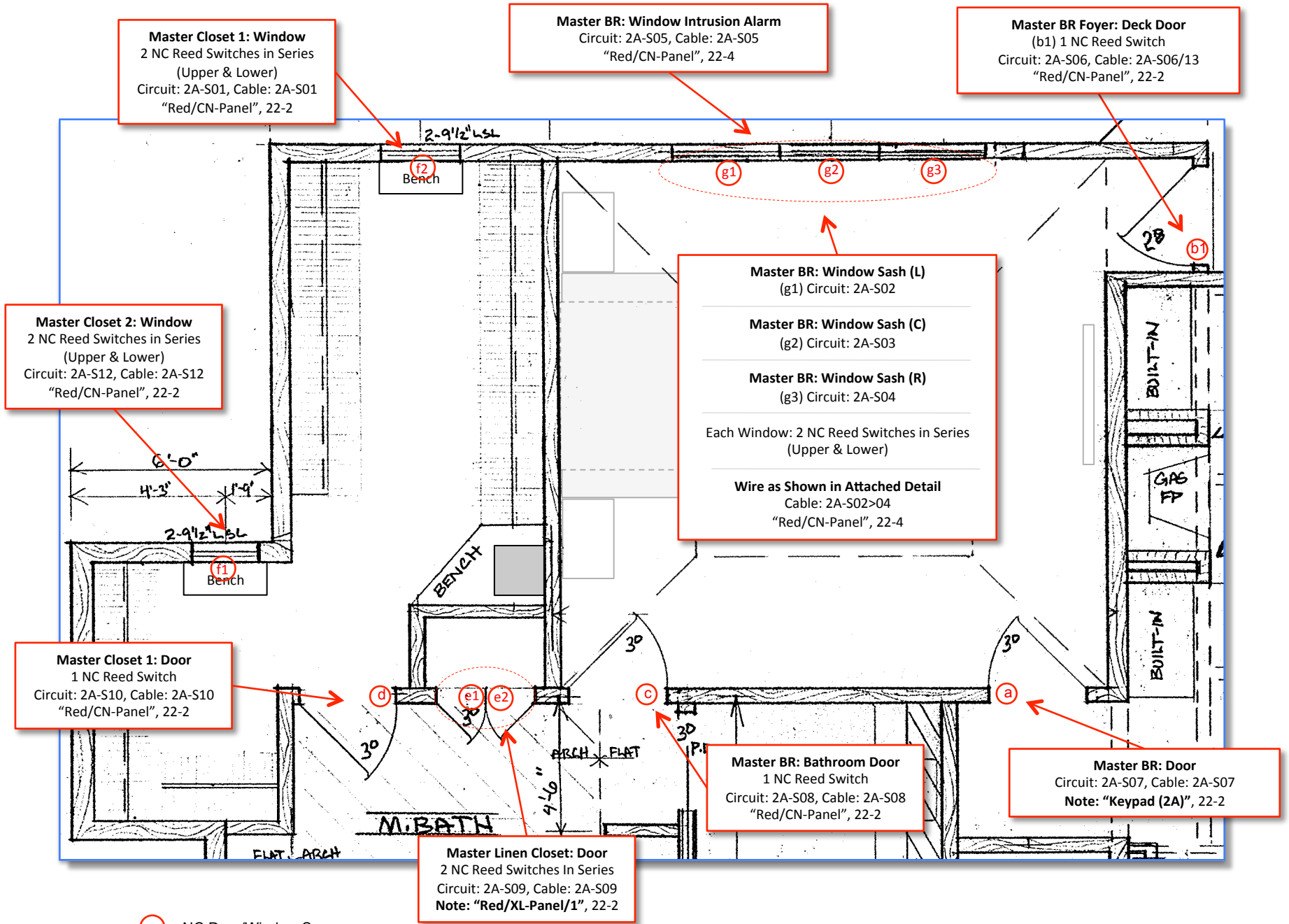
"Foyer: Outlets"
 Circuit: "2C-15", Cable: "2C-15",
 "Red/XL-HVRB", "Pink/CB-Panel"
 14-3, AFI 15A Breaker

Continues To: "Foyer"

-  = 15A Quad (¼ Switched)
-  = 15A Duplex (TV Mount)
-  = 15A Duplex
-  = 15A Duplex (½ Switched)

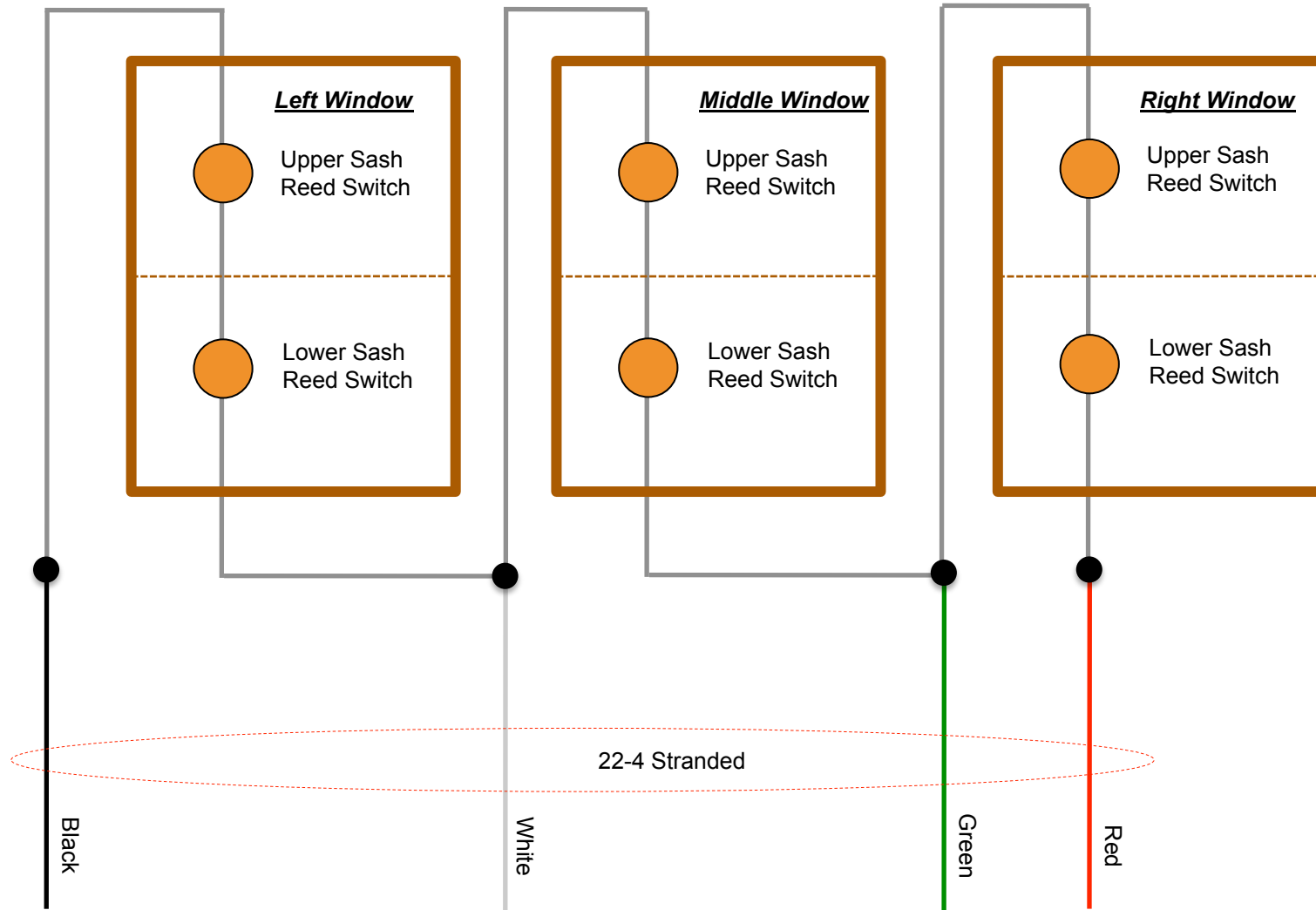
Scale: 4' per inch

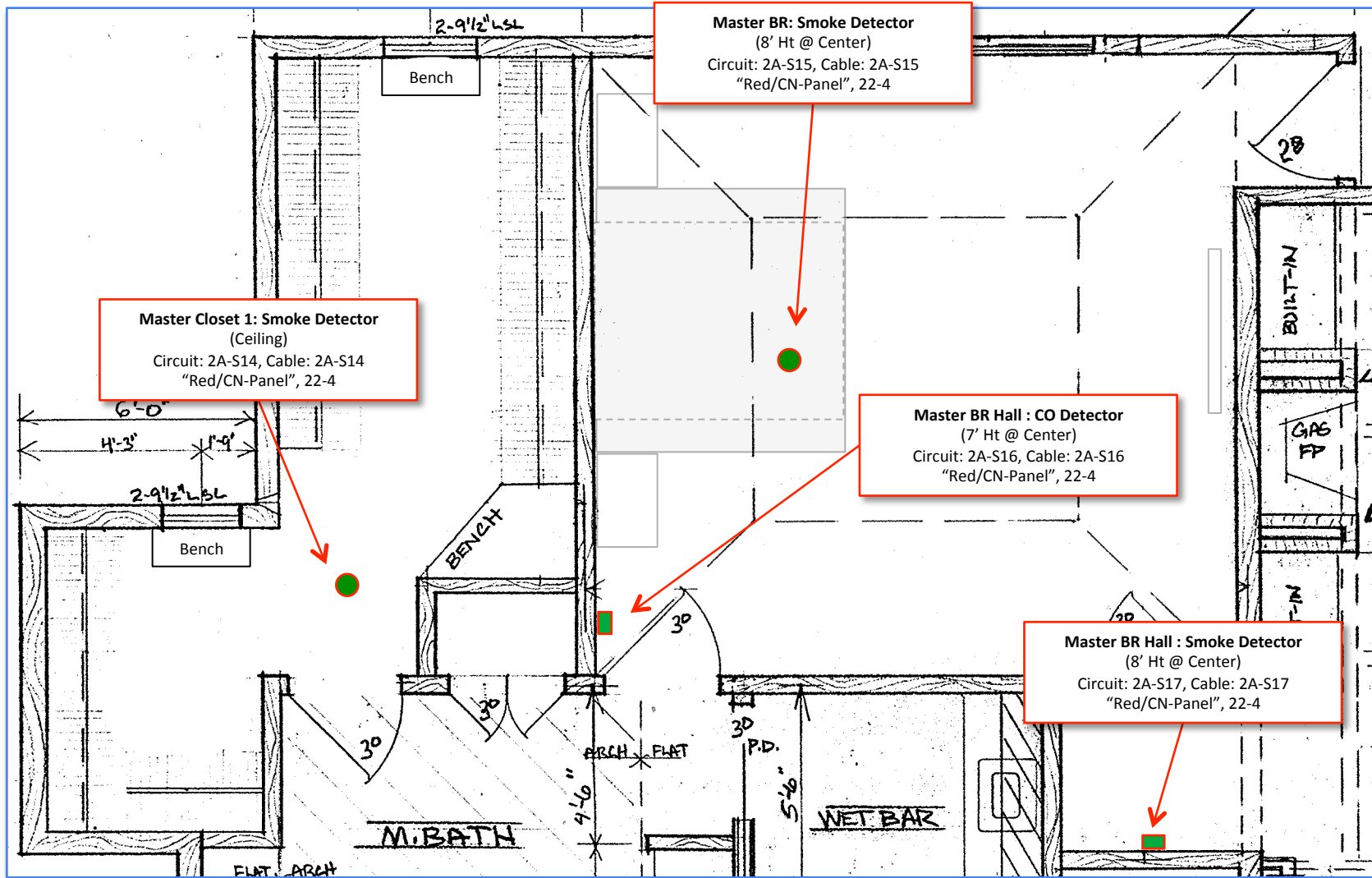
Power Wiring



Sensors 1

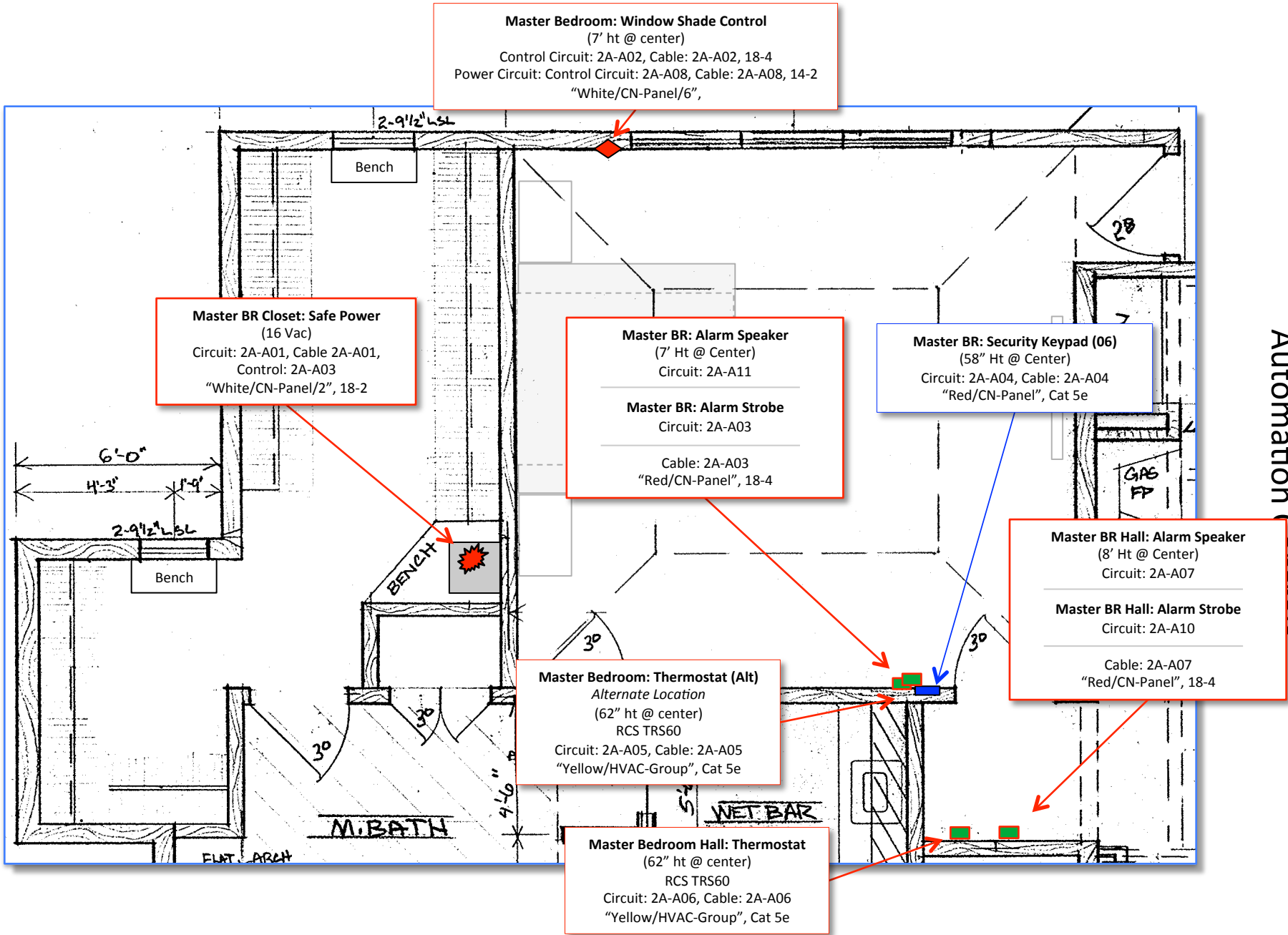
Scale: 4' per inch





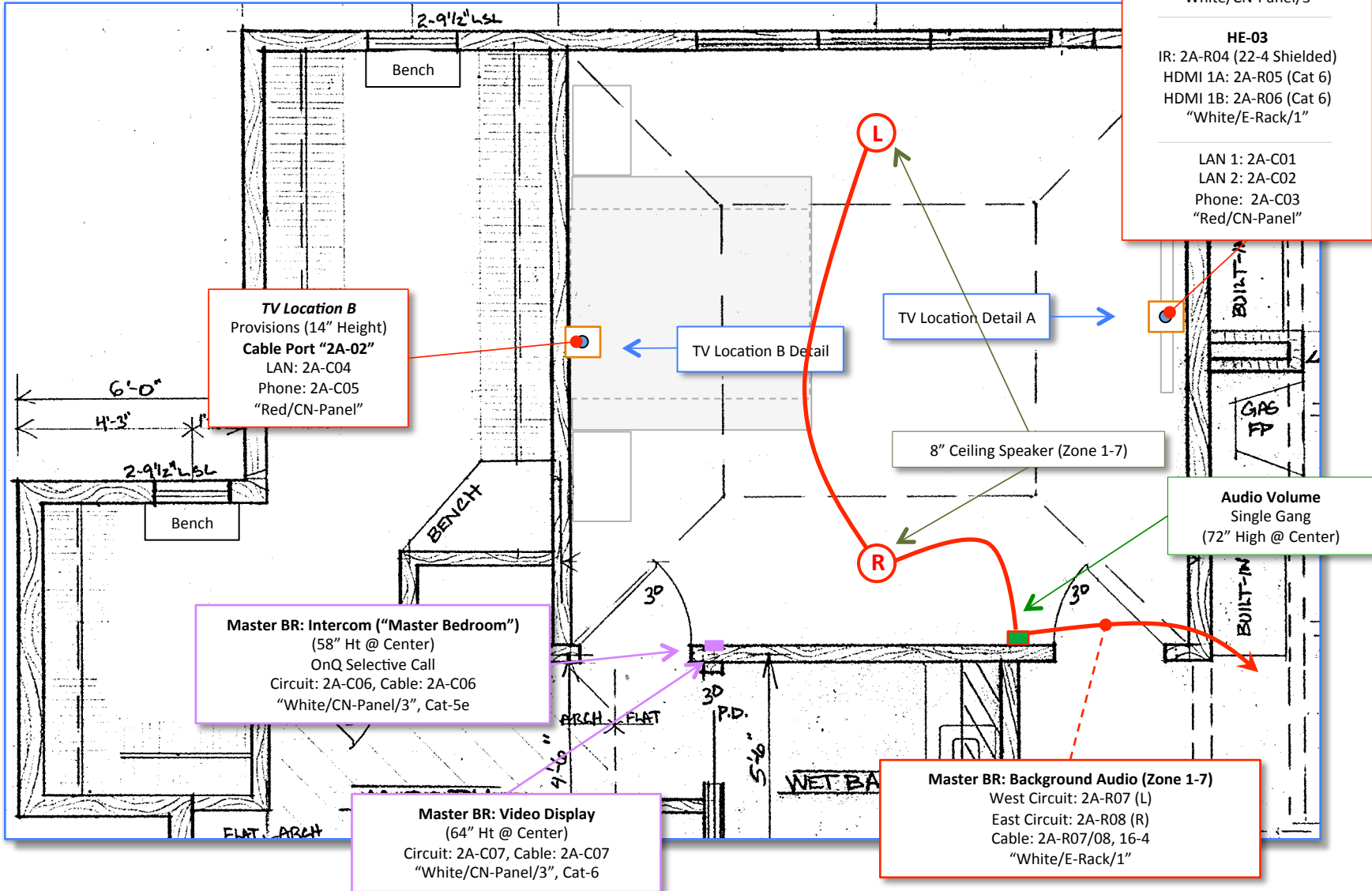
Sensors 2

Scale: 4' per inch



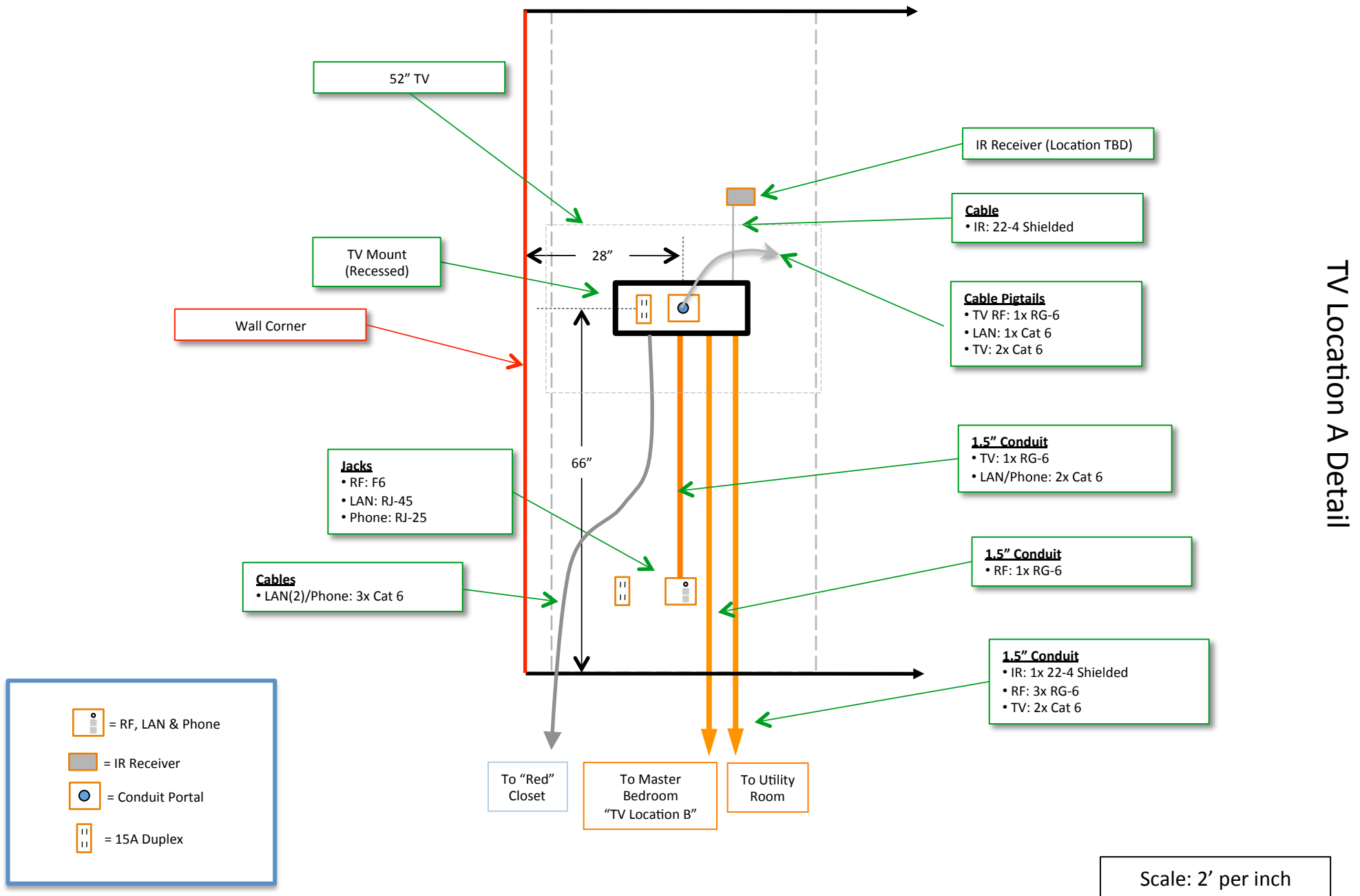
Scale: 4' per inch

All LAN & Phone Cables: Cat 6, "Red/CN-Panel"

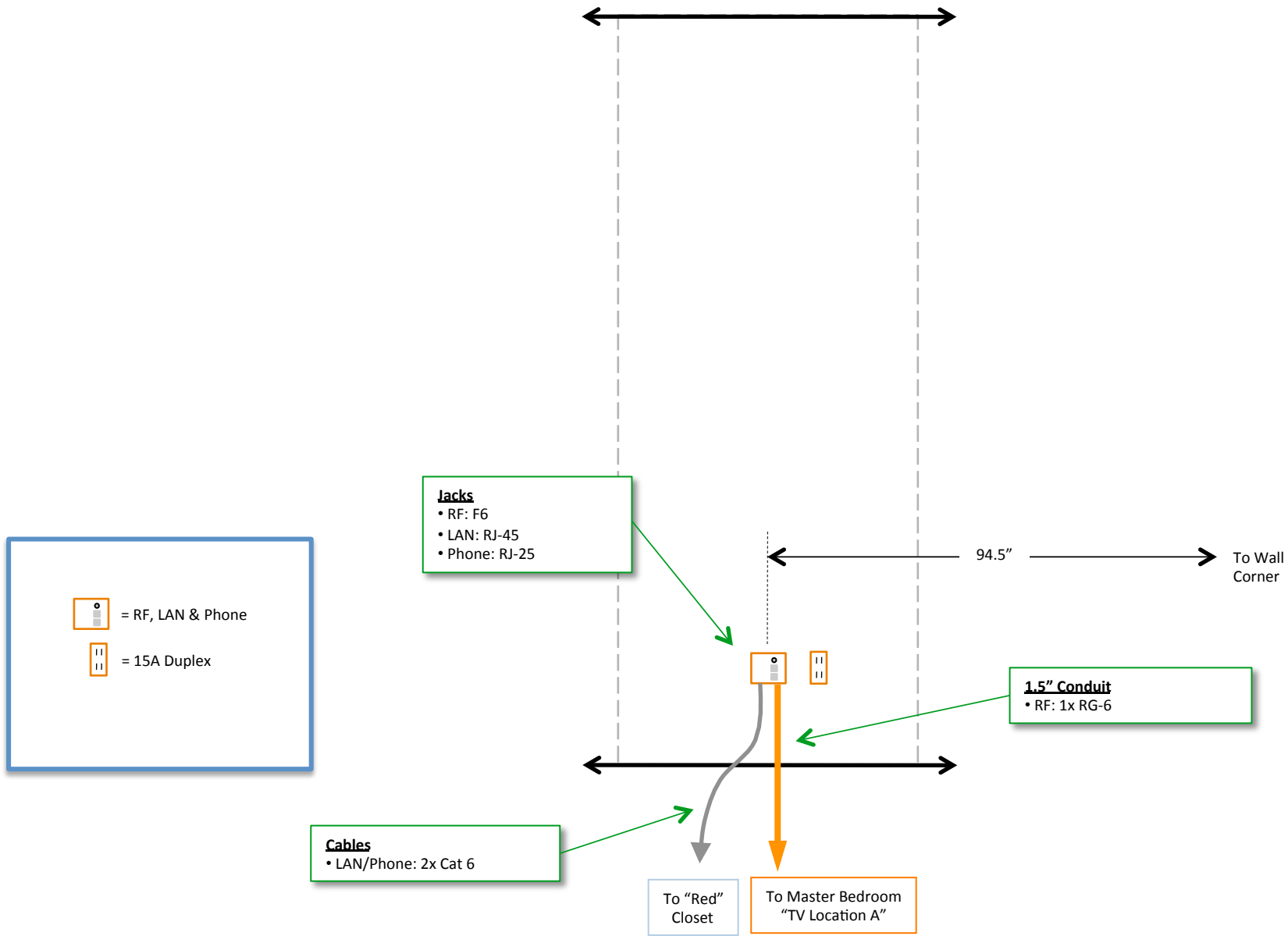


Communications

Scale: 4' per inch

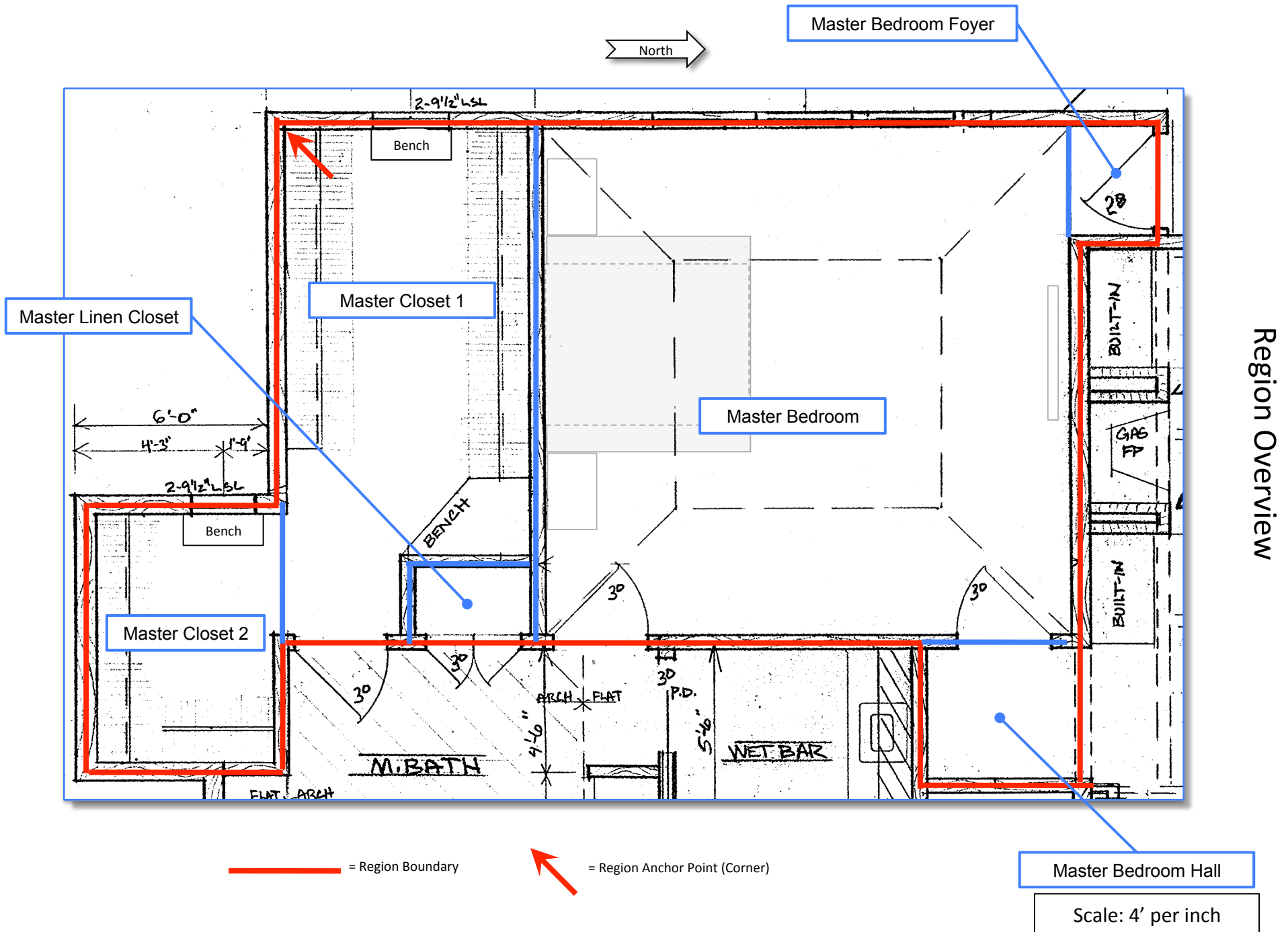


TV Location A Detail



TV Location B Detail

Scale: 2' per inch



Region Overview